



KIRRA
GARDENS
CAMBERWELL

AN ICONIC CURATED TEAM

A team of great minds have been assembled to bring Kirra Gardens to life, united by a joint commitment to innovation, authenticity, collaboration and sustainability. The project has been spearheaded by premium property developer Emery Group, with management by the team at SEMZ. A location as distinguished as this could only be matched by Australia's most esteemed and highly-awarded designers. Architecture and interiors have been brought to life by Chahid and Sammy Kairouz of the award-winning C.Kairouz Architects, with gardens by our country's most well-known landscape designer, the inimitable Jamie Durie of Durie Design. The result is a collection of considered, sustainable and timeless residences that redefine modern design as we know it.

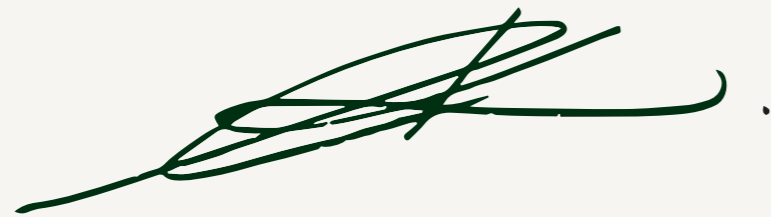
“EMERY GROUP HAVE BROUGHT TOGETHER THE AWARD-WINNING TEAM AT C.KAIROUZ ARCHITECTS AND RENOWNED DURIE DESIGN TO CREATE THIS EXCLUSIVE SERIES OF HOLISTIC DWELLINGS, WHICH CHAMPION LANDSCAPE AND OFFER WELL-CONNECTED, HEALTHY SPACES TO LIVE AND THRIVE IN. KIRRA GARDENS OFFERS ATTAINABLE LUXURY WITH BUILT-IN SUSTAINABILITY”

Emery Group

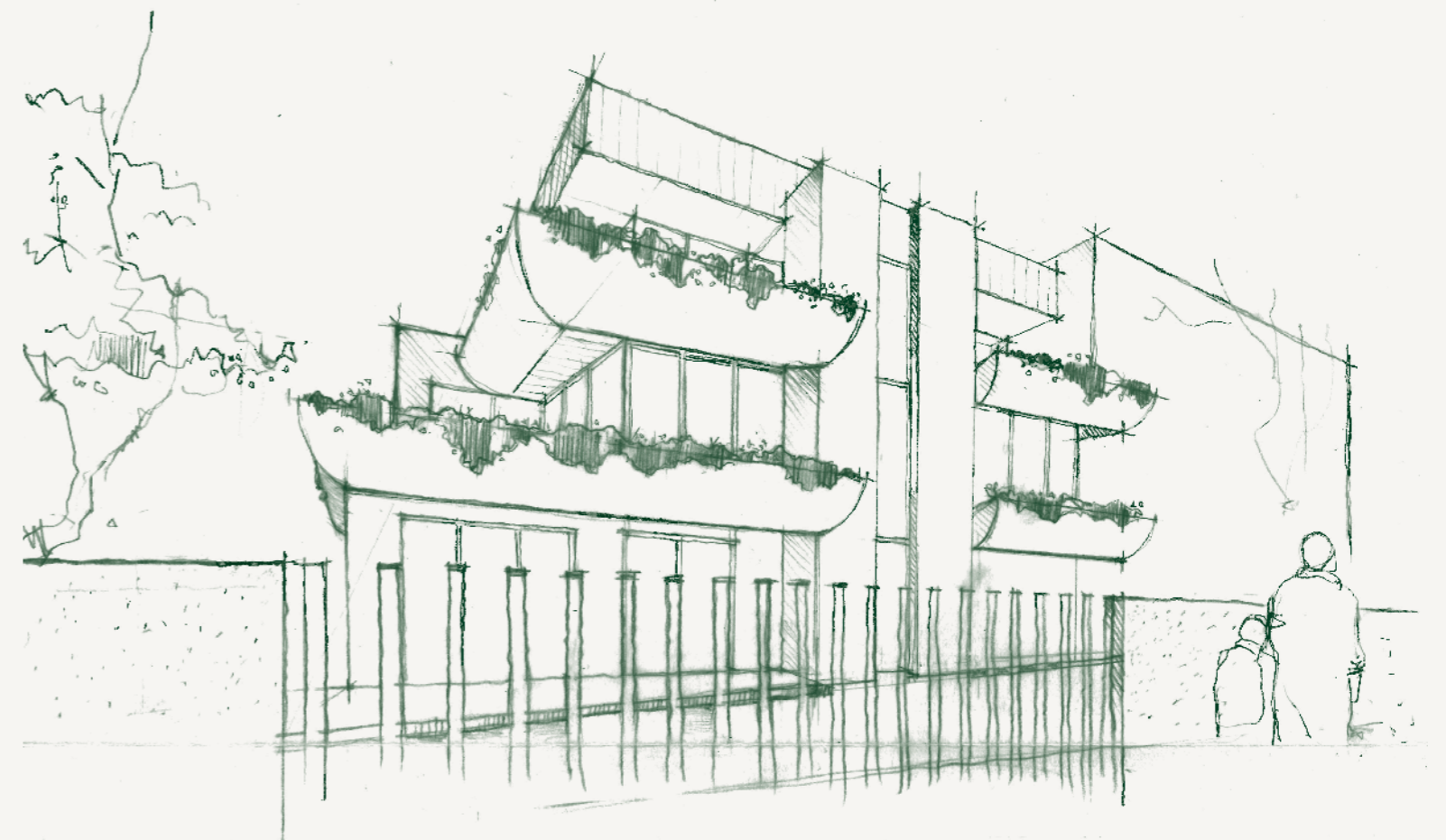
PART I
DESIGN

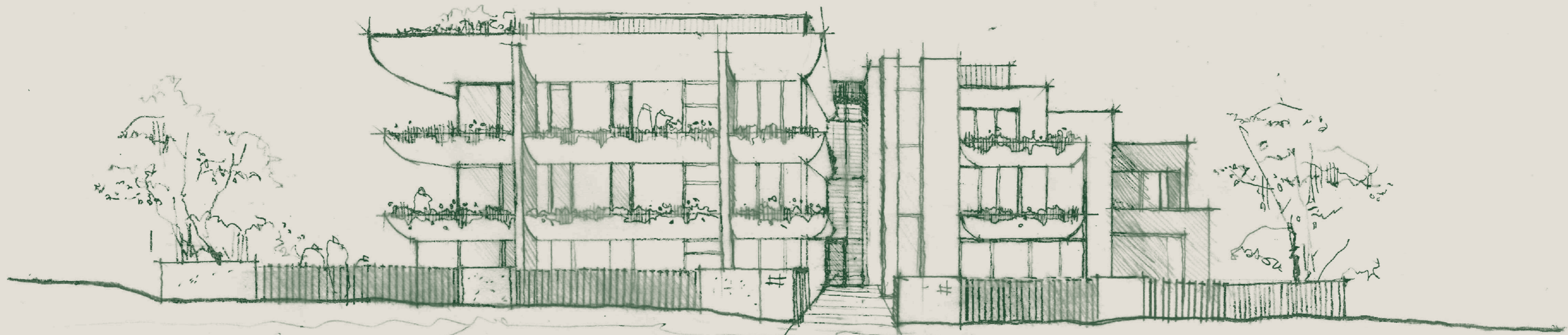
THE ARCHITECTURE OF KIRRA GARDENS IS SCULPTURAL IN FORM,
ROBUST IN MATERIALITY AND TIMELESS IN APPEAL. TAKING CUES
FROM THE ICONIC HERITAGE CHARACTER OF CAMBERWELL, IT
STANDS PROUDLY ON ITS CORNER BLOCK AS AN EXEMPLAR OF
CONTEMPORARY ARCHITECTURE.

“THE FORM REFERENCES TRADITIONAL AND ELEGANT ARCHITECTURAL ELEMENTS WITH ITS INVITING ARCHWAYS AND GRAND COLUMNS, WHICH WELCOME VISITORS AND ENGAGE WITH THE STREETScape, PRESENTING A CONTEMPORARY PALATIAL FEEL.”



Chahid Kairouz
Principal at C.Kairouz Architects







Making the ultimate first impression, the façade has been meticulously crafted to complement the existing fabric of Camberwell whilst delivering something dynamic to the area. Curved balconies bring a sculptural and an organic aesthetic to the building, enhanced by large archways and timeless features. Embracing natural textures and monochromatic tones, the understated materials contrasts with the lush greenery of the landscaping. An arbour entryway fosters a prominent sense of arrival, creating an air of grandeur and enriching the experience of ‘coming home’.





IN CONVERSATION WITH CHAHID AND SAMMY FROM C.KAIROUZ ARCHITECTS
ABOUT KIRRA GARDENS, FROM CONCEPTION TO FINAL OUTCOME.

What inspired the architecture of Kirra Gardens and how has it evolved from this concept?

CK & SK The evolution of Kirra Gardens stems from long-lasting, grand structures of eras past, such as those by the late modernist architect, Oscar Niemeyer. Our goal was to design a simple streamlined language of architecture that derived its beauty from its subtle detailing in the pursuit of timelessness.

The result is a responsive design that addresses its Camberwell locality and corner site with simplified, sculptural forms and grand, romantic curves. These pillars combine past and present styles, while providing a strong framework greenery can grow over - characteristics, which create a welcoming sentiment and a perception that the building has always stood there.

Integrating landscape into structural form throughout the property was essential to the spirit of Kirra Gardens. Special attention went into including communal areas and green spaces within the architectural fabric. We wanted to give residents and visitors a positive, sensory experience when exploring the property. It was important to us that connectivity with nature and landscape was showcased at every turn - providing balance between urban living and the natural world.

What informed the materiality selection on the façade?

CK & SK For this project, we saw a real opportunity to deliver a building that would be a present-day relic of sorts, with real longevity. While the building is entirely new construction, our aim was to engage an old-world feeling with modern sensibilities and efficiencies.

Robust and textural off-form concrete and brick grounds the building and is reminiscent of local materiality with its stone like quality. It provides an excellent backdrop for draping native plantings, which will become an integral part of the building fabric overtime.

Sleek, light coloured metal cladding creates a sharp modern crown on top, while a series of arbours and climbing frames reach between the forms to further encourage vertical, green structures. Timber soffits and fencing soften the harder surfaces with their warmth and natural connectivity.

Large, high performing double glazed windows and black reflective panels were incorporated to create simple, uniform bands throughout each level. These walls of glass also assist in mirroring landscaped vistas while providing optimum internal comfort and providing lots of natural light in all the right places.

What kind of mood do the interiors evoke?

CK & SK The interiors at Kirra Gardens have been crafted to create serene and restful spaces. These residences have been designed to harmonise with the exterior presentation, blocking out noise and distractions of a busy lifestyle. Comprising of soft shades, subtle curves, and organic elements, each interior space is equipped with sensory experiences, simplifying life and promoting well-being.

What are some of the key interior features designed to enhance the lives of residents?

CK & SK Interior attributes include generous floorplans with a strong focus on functionality, flexibility, and a series of well-connected zones. Boasting multiple features such as high-quality integrated electric appliances, seamless storage opportunities, and generous island benchtops the intention is to encourage uncomplicated, sustainable, and clutter-free lifestyles.

Where would we find you unwinding in these homes after a long day?

CK I'd want to be outside after a long day. I see myself sitting in the landscaped terrace or up in the 'grow your own food' gardens. Wine in hand, under dappled sunlight cast from trailing plant-covered arbours, I would be taking in the local treetop views, sitting and unwinding with my family and community.

SK I gravitate to the generous open plan living area. I can see myself hosting family and friends in the summertime creating good times and long-lasting memories.

If you could sum up Kirra Gardens in a sentence, what would that be?

CK & SK Bespoke residences with a timeless quality to carry through the ages.

PART II
INTERIORS

BATHED IN NATURAL LIGHT, THE INTERIORS ARE COMPOSED OF PURE AND LUXURIOUS FINISHES, FINELY CRAFTED DETAILS AND A LIMITLESS SENSE OF SPACE. WITH THE CHOICE OF PREMIUM OR PLATINUM APARTMENTS, RESIDENTS WILL EXPERIENCE THE HEIGHTENED QUALITY OF LIFE THAT COMES FROM GENUINELY CONSIDERED DESIGN.



PREMIUM APARTMENTS

Appointed with engineered stone, innovative Miele appliances and plentiful integrated storage, the premium kitchen is functional whilst also being the heart of the home. The pale oak scheme creates a bright, crisp aesthetic whereas the grey oak scheme evokes an air of designer sophistication.



PLATINUM PENTHOUSES

The platinum kitchen presents a calibre of luxury that is rarely witnessed. Marble island benches formed of striking natural stone provide an unrivalled amount of surface space. Spanning almost the entire width of the room, custom joinery affords all the storage one could ever need — and then some. Integrated is a full suite of Gaggenau appliances and a wine fridge caters to the epicurean's way of living.







*“THOUGHTFUL AND STRIKING DETAILS ARE
THREADED THROUGHOUT, HIGHLIGHTING THE
EXTERIOR FORMS AND CARRYING THEM RIGHT
THROUGH THE INTERNAL DESIGN, FROM SOFT
CURVATURE, ELEGANT JOINERY FINISHING AND
QUALITY FIXTURE SELECTIONS, TO TEXTURALLY
RICH MATERIALS – THE RESIDENTS FEELING OF
HOME HAS BEEN PARAMOUNT.”*



Sammy Kairouz
Interior Design Associate at C.Kairouz Architects



Artist Impression - Platinum Living Detail





In the modern age, having a home office is paramount. The platinum apartments feature curated studies, fostering a sense of tranquillity as you go about your workday. Bespoke joinery provides an abundance of storage, display shelves and an expansive built-in desk. The fluted glass window brings texture and elegance to the palette whilst maintaining a sense of privacy.







PREMIUM APARTMENTS

The premium bathroom is defined by a palette of organic finishes, cultivating an instant sense of calm. The floors and walls have been appointed with a textural feature tile, selected not just for its elegant aesthetic but its impeccable durability. The space is accented by brushed nickel tapware, which brings a polished quality to the palette.



PLATINUM PENTHOUSES

The platinum bathroom is comprised of natural yet highly opulent finishes. Creating an organic and tranquil atmosphere, grey feature tiles combine with texturally natural stone. This is juxtaposed by black framing accents and brushed nickel tapware, which together impart a sleek and sophisticated aesthetic.



Like stepping into a 'day spa', the platinum ensuite has been designed without compromise. The oversized shower has been equipped with a dual shower system and built-in bench seat, whilst the large free-standing tub looks out onto the terrace, affording a beautiful green vista as you unwind. The adjoining walk-in-wardrobe is a crafted retreat boasting abundant storage space and a luxurious bespoke dresser.





Striking the ideal balance between style and functionality, the premium bathroom reflects a true commitment to the finer details. Here, storage has been carefully considered – a large vanity houses a generous amount of cabinet space, alongside a sleek walk-in shower. The curve, in the mirror, whilst subtle, imbues a beautiful sense of craftsmanship.

PART III
GARDENS

AN URBAN SANCTUARY, KIRRA GARDENS IS DEFINED BY LUSH AND CONSIDERED OUTDOOR SPACES THAT ARE BUILT INTO THE VERY FABRIC OF THE BUILDING. THE LANDSCAPING BLURS THE LINES BETWEEN IN AND OUT WHILST FOSTERING GREATER SUSTAINABILITY, INCREASED WELLBEING AND A GENUINE SENSE OF COMMUNITY.



*“IT’S NEVER BEEN SO IMPORTANT FOR
THOUGHTFUL LANDSCAPE DESIGN TO PLAY AN
EQUAL ROLE IN SOPHISTICATED RESIDENTIAL
ARCHITECTURE. KIRRA GARDENS HAS EMBRACED
THIS PHILOSOPHY FROM ITS INCEPTION, RESULTING
IN A TRULY BALANCED INTUITIVE DESIGN THAT
OFFERS A HARMONIOUS LIFESTYLE FILLED WITH
GREENERY. THE TEAM AT DURIE DESIGN AND
I ARE PROUD TO PLAY A PART IN THIS.”*

A handwritten signature in black ink that reads "Jamie Durie". The signature is fluid and cursive, with a long horizontal stroke at the end.

Jamie Durie OAM
Principal at Durie Design

DURIE DESIGN

International award-winning designer and author Jamie Durie started his design practice 19 years ago. Since then, he and his team at Durie Design have received over 33 international design awards, including a gold medal at the Chelsea Flower Show in London and further gold medals received in Singapore, Tokyo, Auckland NZ, Melbourne, and Durie’s place of birth, Sydney.





“WITH A VISION TO CREATE A MODERN VILLAGE FEEL, TRANQUIL OUTDOOR SPACES WHICH ENCOURAGE SOCIALISATION BETWEEN RESIDENTS, THE COMMUNITY AND GARDENS ARE INTEGRATED INTO THE BUILDING FABRIC AND WERE ESSENTIAL TO BRINGING THESE RESIDENCES TO LIFE.”

Chahid Kairouz
Principal at C.Kairouz Architects

A number of communal outdoor spaces have been embedded into the design of Kirra Gardens, cultivating a lively village feel, sense of community and strong connection to nature. Built-in seating and dining amenities will attract residents to utilise these spaces regularly – whether it’s enjoying a glass of wine with friends on the rooftop or unwinding with a book in the central courtyard. Lush vegetation creates an atmosphere of tranquillity whilst providing habitat to local birdlife and improved sustainability levels throughout.





PART IV
KIRRA GARDENS COMMUNITY

COMMUNITY IS AT THE HEART OF KIRRA GARDENS. MORE THAN JUST HOMES, IT IS A SUSTAINABLE VILLAGE ENVIRONMENT WHERE RESIDENTS CAN SHARE EXPERIENCES WITH LOVED ONES AND SOCIALISE EASILY WITH NEW NEIGHBOURS. GROW YOUR OWN ORGANIC FOOD IN THE COMMUNAL GARDEN, ENJOY ALFRESCO DINNER PARTIES ON THE ROOFTOP OR RELAX AMONGST GREENERY WITH FRIENDS OF OLD OR NEW. THE COMMUNITY WILL BE ASSISTED BY A RANGE OF SERVICES, VIA A BUILDING APP, MAKING LIFE AT KIRRA GARDENS EFFORTLESS, SAFE AND REWARDING.

*“KIRRA GARDENS OFFERS AFFORDABLE
LUXURY WITH BUILT-IN SUSTAINABILITY.”*

Jon Purcell
Director at SEMZ

IN HARMONY WITH OUR ENVIRONMENT, KIRRA GARDENS PROMOTES A CONSCIOUS LIVING EXPERIENCE THROUGH A SERIES OF HIGHLY INNOVATIVE, SUSTAINABLE FEATURES. LIVE IN ABSOLUTE COMFORT WHILST POSITIVELY CONTRIBUTING TO THE WORLD OF TOMORROW.

To achieve a 7 star rating, homes are equipped with high efficiency heat hot water pumps, which are circa 300% more energy efficient than conventional electric resistance water heaters. Double glazed windows improve thermal comfort within the home, reducing the need for heating and cooling whilst minimising noise. A large solar PV system will also reduce your energy bills whilst lowering your carbon footprint significantly. Extensive landscaping contributes to greater sustainability within the development, complete with large rain gardens that treat stormwater prior to discharge from the building. There is also 15,000 litres of rainwater storage for reuse. Provision for electric vehicle car stations is provided in the garage.



7 STAR BUILDING FABRIC

Kirra Gardens achieves a 7 star NatHERS rating through a range of factors including double-glazed windows, solar power, natural light, quality building materials and more.



CHARGING STATIONS (UPGRADE OPTION)

There is provision for charging stations, enabling you to charge your electric vehicle on-site, with total ease.



HEAT PUMP SYSTEM

A heat pump system for hot water is circa 300% more efficient than conventional electric resistance water heaters, allowing you to save on electricity bills and reduce your carbon footprint.



RAINWATER GARDENS

There are 15,000 litres of rainwater for reuse across Kirra Gardens. There is a total of 25m² of rainwater gardens across the development.



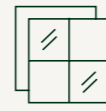
SECURITY BUILDING APP

A helpful security app will assist in visitor management, mobile intercom, emergency management and a range of other services – keeping your residence and the community safe and secure.



CAR & DOG WASH

Keep your vehicle in pristine condition with a convenient on-site carwash. For your canine friends, there are also dog washing facilities.



LIGHTBRIDGE GLASS

LightBridge* is the highest performing double-glazed glass available. It curbs the flow of heat in and out of your home to allow for expansive glazing whilst still maintaining optimum energy efficiency.

* Disclaimer: or equivalent glass dependent on supply availability at time of construction.



SOLAR HARVESTING

Solar generated energy is harvested to drive the heat pump system and common power, keeping electricity bills and carbon emissions at a minimum.



PART V
CAMBERWELL LIFESTYLE

RICH IN CULTURE, HISTORY AND NATURAL BEAUTY, THE CAMBERWELL LIFESTYLE IS SIMPLY UNPARALLELED. FROM BUSTLING MARKETS, ACCLAIMED RESTAURANTS AND AN ICONIC ART DECO CINEMA, TO CENTURY-OLD PARKS, SCENIC TRAILS AND A SCOPE OF PRESTIGIOUS SCHOOLS – THIS STYLISH, YET TRANQUIL NEIGHBOURHOOD EMBODIES MELBOURNE'S REPUTATION AS ONE OF THE BEST CITIES IN THE WORLD.

KIRRA GARDENS

• • CAMBERWELL

FERNDALE PARK

BIALIK COLLEGE

SCOTCH COLLEGE

CAMBERWELL SPORTSGROUND

CAMBERWELL PRIMARY SCHOOL

FORDHAM GARDENS

BURKE ROAD

CAMBERWELL SOUTH PRIMARY SCHOOL

BACK CREEK RESERVE

HARTWELL TENNIS CLUB

LEO'S FINE FOOD & WINE SUPERMARKET

CAMBERWELL JUNCTION

CAMBERWELL HIGH SCHOOL

>>>

WITHIN CLOSE PROXIMITY OF ALL CAMBERWELL HAS TO OFFER, RESIDENTS OF KIRRA GARDENS WILL COME TO TRULY UNDERSTAND THE MEANING OF THE WORD 'CONVENIENCE'. ENJOY HAVING EVERYTHING YOU COULD EVER NEED AT ARM'S REACH, WITH A PEACEFUL SANCTUARY TO RETURN TO AT DAY'S END.

GREEN SPACES

- 1 Anderson Park
- 2 Bowen Gardens
- 3 Camberwell Sportsground
- 4 Fairmont Avenue Reserve
- 5 Ferndale Park
- 6 Fordham Gardens
- 7 Fritsch Holzer Park
- 8 Frog Hollow Reserve
- 9 Hartwell Station Reserve
- 10 Highfield Park
- 11 Lynden Park
- 12 Read Gardens
- 13 Willison Park

LEISURELY RECREATION

- 14 Camberwell Bowls Club
- 15 Camberwell Library
- 16 Camberwell Tennis Club
- 17 Hartwell Tennis Club
- 18 Rivoli Cinemas

CONNECTIVITY

- 19 Bus No. 612
- 20 Hartwell Train Station
- 21 Tram No. 72
- 22 Tram No. 75

EATING & DRINKING

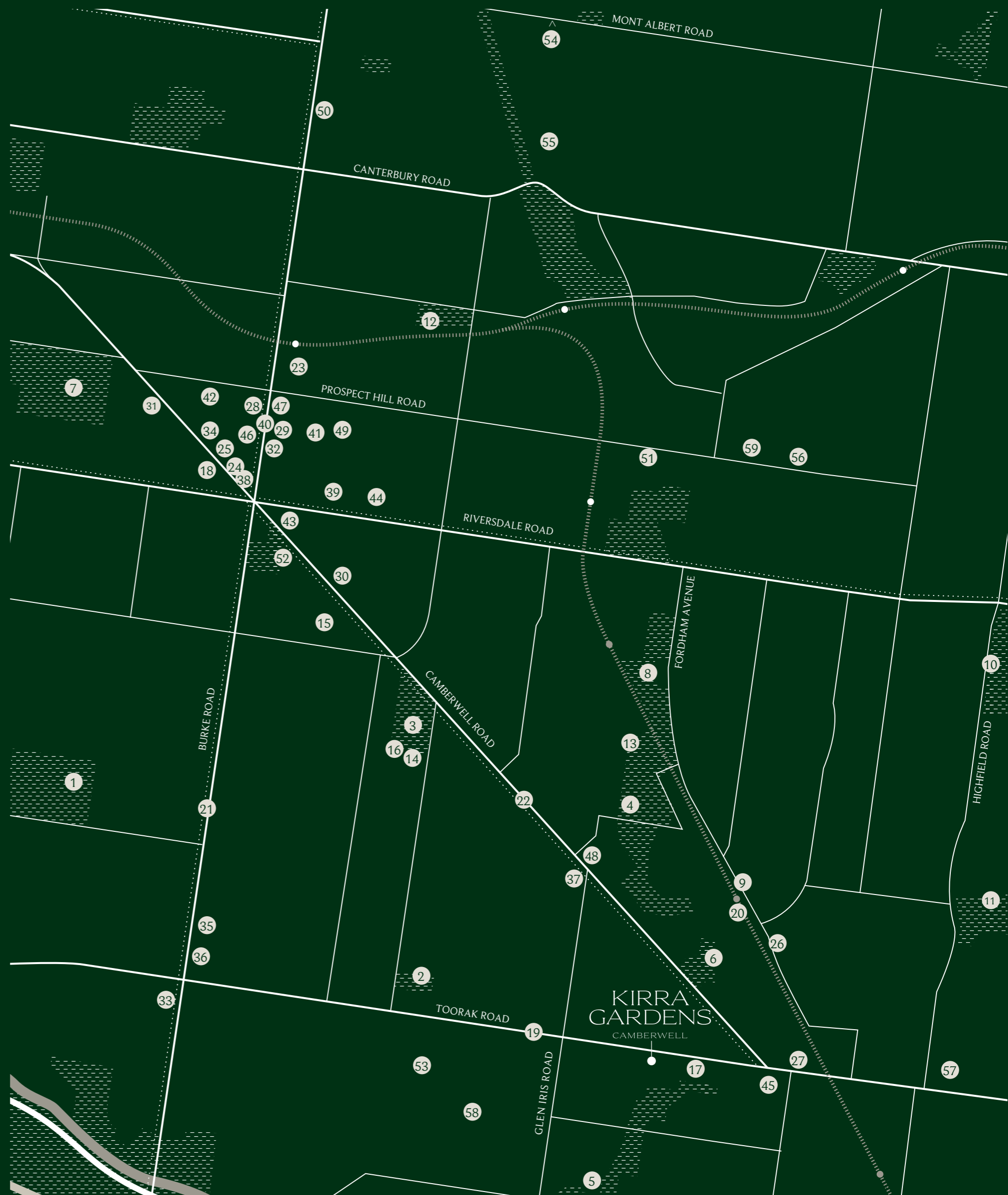
- 23 1961 CoffeeHead
- 24 East End Wine Bar
- 25 Fiorelli Restaurant
- 26 Fordham's Milk Bar
- 27 Hibiki
- 28 Italy 1 Camberwell
- 29 Laurent Bakery
- 30 Legacy Camberwell
- 31 Light Years Cafe
- 32 My Other Brother
- 33 Napa
- 34 Ohsho Japanese Restaurant
- 35 Sucre du Jour
- 36 The Bakers Wife
- 37 The Old Garage
- 38 Young's Wine Rooms

PLENTIFUL SHOPPING

- 39 Camberwell Fresh Food Market
- 40 Camberwell Shopping Precinct
- 41 Camberwell Sunday Market
- 42 Coles Camberwell
- 43 Country Road
- 44 Euforia
- 45 Leo's Fine Food & Wine Supermarket
- 46 Lululemon
- 47 Mecca Cosmetica
- 48 Monaco's Continental Delicatessen & Food Store
- 49 Woolworths Camberwell

LOCAL EDUCATION

- 50 Camberwell Girls Grammar School
- 51 Camberwell High School
- 52 Camberwell Primary School
- 53 Camberwell South Primary School
- 54 Camberwell Grammar School
- 55 Canterbury Girls' Secondary College
- 56 Canterbury Primary School
- 57 Hartwell Primary School
- 58 St. Cecilia's Primary School
- 59 Strathcona Girls Grammar School





IF CAMBERWELL COULD BE SUMMARISED IN ONE WORD, THAT WORD WOULD BE 'GREEN'. TAKE A WALK THROUGH THE SUBURB'S PICTURESQUE STREETS, WHERE DAPPLED LIGHT STREAMS THROUGH A CANOPY OF ONE-HUNDRED-YEAR OLD AVENUE TREES. MELBOURNE'S MOST SPECTACULAR PARKS AND GARDENS CAN BE FOUND HERE, INVITING YOU TO BASK IN THE SENSE OF BLISS THAT COMES WITH GETTING BACK TO NATURE.



Camberwell's Ultimate Picnic Spots

Bursting at the seams with natural retreats, Camberwell is a go-to picnic destination. Of all its outdoor spaces, Fordham Gardens is undeniably the most beautiful — located just 500m from your doorstep. On any day of the week, you'll find locals gathering with loved ones on its lush lawns, reading under its magnificent heritage-listed trees or meandering the pristine pathway, admiring local birdlife and colourful rose bushes.



Picturesque Views & Scenic Trails

Whether you're a dog owner, a runner or a lover of leisurely strolls — Camberwell has you covered. The neighbourhood is laden with scenic walking paths, from the leafy Ferndale Trail to the famous Anniversary Outer Circuit Trail. Where a panoramic vista of the city skyline is met by rows of verdant treetops, Anderson Park is another popular place for a walk. Afterwards, let your pup run free on the grassy off-leash oval.





IN THE LAST DECADE, CAMBERWELL HAS EVOLVED INTO A THRIVING HUB FOR DINING. SOME OF OUR CITY'S MOST INNOVATIVE RESTAURATEURS HAVE OPENED UP THEIR DOORS HERE, AFFORDING THE COMMUNITY WITH A DIVERSE BLEND OF RESTAURANTS, WINE BARS, CAFES AND BAKERIES. EXPLORE ALL THAT BUZZING CAMBERWELL JUNCTION HAS TO OFFER, OR STROLL DOWN TOORAK ROAD FOR YOUR MORNING CUP OF COFFEE. THE OPTIONS ARE SIMPLY ENDLESS.



Plentiful Cafe's & Boutique Brunches

Mornings in Camberwell are all about brunch dates, artisanal coffee and freshly baked bread. The suburb is known for its covetable collection of cafes, where quality ingredients and inventive recipes meet cutting-edge interior design. The closest cafe to Kirra Gardens is Hibiki – an airy, light-filled space, offering Japanese-inspired brunch dishes and house-roasted coffee beans.



Wine & Dine

When the sun dips, Camberwell transforms into a playground for culinary indulgence. Along the main strip, discover a melting pot of eateries – from fine dining establishments and sleek wine bars to Italian institutions and casual Asian restaurants. Immerse yourself in an epicurean dining experience on any night of the week, without even having to leave your 5km radius.





WHERE OLD-WORLD SERVICE MEETS MODERN VARIETY, CAMBERWELL HAS BEEN MELBOURNE'S MAJOR SHOPPING HUB FOR OVER A CENTURY. HOME TO TWO HISTORIC MARKETS – ONE FOR FRESH FOOD, THE OTHER FOR VINTAGE TREASURES – AS WELL AS A BOUTIQUE RETAIL OFFERING, GOURMET PROVIDORES, HOMEWARES STORES AND BEYOND, THE CAMBERWELL COMMUNITY COULDN'T BE MORE SPOILED FOR CHOICE.

Left - Camberwell Fresh Food Market, Right - Leo's Fine Food & Wine Supermarket



Fresh Produce & Fine Food

A beacon for all things gourmet, Camberwell is home to a plethora of delicatessens, fruit shops and speciality supermarkets. A stone's throw from Kirra Gardens, Leo's Fine Food is a haven of artisanal products and household goods, or visit Monaco's Deli for some of the best Italian ingredients in Melbourne. Camberwell Fresh Food Market has been an iconic part of the suburb's cultural fabric since the 1930s. Despite expansion and renovation over the years, it has maintained its old-school charm and traditional way of trading, with many second, third and even fourth generation stallholders.



High Fashion, Homewares & Everything In Between

If you're more fashionista than foodie, Camberwell is well-equipped for a good dose of retail therapy. Camberwell Junction plays host to a myriad of well-loved retailers including Country Road, Seed, Witchery, Oska and Lululemon. Away from the action, you'll find a range of locally-owned stores tucked away in the suburb's smaller shopping villages. Aster + Wilde resides on sleepy Fordham Avenue, housing a stunning collection of flowers, homewares, gifts and prints.





CAMBERWELL IS, AT ITS ESSENCE, A DESTINATION FOR LEISURELY LIVING. IMBUED BY COMMUNITY ATMOSPHERE, THE NEIGHBOURHOOD ABOUNDS WITH SPORTING CLUBS AND AMENITIES, FOSTERING A VIBRANT AND HEALTHY OUTDOOR LIFESTYLE. AND THEN THERE'S THE CROWN JEWEL – THE MAGNIFICENT RIVOLI CINEMAS – A GLORIOUS EXAMPLE OF ART DECO ARCHITECTURE AND AN UNRIVALLED PLACE TO ENJOY A NIGHT OUT AT THE MOVIES.



A Life of Leisure

Get in touch with your competitive side at one of Camberwell's exceptional sporting clubs. Enclosed in a leafy setting, Hartwell Tennis Club offers coaching, court hire and weekly tournaments, with an inviting atmosphere to match. Lawn Bowls more your thing? Camberwell Bowls Club is a hub for community activity, and is a popular spot for functions and events.



Iconic Cultural Hubs

Established in 1940, the Rivoli Cinema is undoubtedly Camberwell's most prized possession. Its Art Deco architecture and decor transports you back to the old Hollywood era, complete with ornate gold detailing, glamorous light fittings and a grand spiral staircase. After the film, debrief at 'nineteenforty' the cinema's sophisticated rooftop bar, where fine wine, scenic views and great atmosphere are found in equal measure.





CAMBERWELL'S RICH HISTORY IS REFLECTED IN ITS PRESTIGIOUS ROLL CALL OF SCHOOLS, WHERE PROUD HERITAGE BUILDINGS SET THE SCENE FOR SOME OF OUR CITY'S MOST INNOVATIVE AND PROGRESSIVE LEARNING ENVIRONMENTS. WITH A RANGE OF OPTIONS ACROSS PRIVATE, PUBLIC, PRIMARY AND SECONDARY SECTORS, TO BE A STUDENT IN CAMBERWELL IS TO HAVE THE CREAM OF THE CROP AT YOUR FINGERTIPS.



Secondary Education

Camberwell's esteemed secondary schools are wholly committed to preparing students for their adult lives. Camberwell Grammar and Camberwell Girls Grammar are two of the most well-regarded private schools in the state, both within close proximity of Kirra Gardens. In neighbouring Hawthorn, Scotch College is an exemplary option for the suburb's young men, as is Strathcona for the young women of the area.



Primary Education

For the suburb's youngest students, Camberwell plays host to an array of exceptional primary schools. Camberwell Primary School is dedicated to providing each child with a love of learning whilst affording them with the skills and knowledge to flourish as they enter high school. St. Cecilia's in Glen Iris employs a holistic and nurturing approach to education, placing strong emphasis on the students' wellbeing.



PART VI
AN ESTEEMED COLLABORATION

BORN FROM A COLLABORATION BETWEEN THE INDUSTRY'S ELITE,
KIRRA GARDENS ATTESTS TO WHAT CAN BE ACHIEVED WHEN
A PASSIONATE AND VISIONARY TEAM IS ASSEMBLED. DEVELOPED
BY EMERY GROUP, MANAGEMENT BY SEMZ PROPERTY ADVISORY
AND PROJECT MANAGEMENT, WITH DESIGN BY C.KAIROUZ
ARCHITECTS AND LANDSCAPING BY DURIE DESIGN.



Emery Group are more than just developers; they are property experts, with experience spanning 60+ years in delivering the very best in residential and commercial buildings throughout Australia. With an in-depth understanding of the marketplace and specialist knowledge in the fields of Architecture, Project Management and Construction, their projects are crafted with finesse and are focused on quality details that offer sustainable residences and community minded spaces that are intuitive to life.

Aligned with like-minded designers, trades and consultants that have a shared vision for excellence, Emery Group ensures quality control and delivery is upheld throughout every aspect of a project, down to the smallest of details. Conceived from carefully selected sites and thorough market research, Emery Group developments are created with a clear vision - to provide homebuyers and investors with enduring assets that stand the test of time and offer optimum value, wellbeing, and comfortable, functional living.

DURIE DESIGN

DURIE DESIGN is a multi-award-winning international landscape architecture and design firm with offices in Sydney and Los Angeles. Working under the vision of Jamie Durie, the firm has completed projects in Australia, Spain, United States of America, United Kingdom, Canada, Japan, Hong Kong, Singapore, Malaysia, Thailand, New Zealand and the United Arab Emirates. From design concept through to construction administration, they engage their clients and project partners to achieve a well-executed design solution. Their passion for what they do is expressed through the work and through their transformational design processes. The natural environment inspires the practice to constantly evolve, aspiring to promote wellbeing and encourage a balanced lifestyle by connecting people to nature.



SEMZ is an independent, boutique Property Advisory and Project Management specialist group formed by Jon Purcell and Ken Santamaria, each with over 20 years experience in the property and construction industry. Working across numerous types of projects and on a range of scales, the SEMZ team aims to establish a level of connection and understanding that will ultimately create great places. SEMZ benefits from extensive experience across the full development cycle and with an in-house project management team which ensures great outcomes are delivered for every project. Respect, honesty, leadership, fulfilment and professional excellence are values that underpin everything SEMZ does.



Built on the key principles of expertise, hard work and accountability, Eton Property Group's strength lies in a proven capacity to continually achieve results from an enthusiastic and efficient team. They are a privately owned company with a collective culture of excellence, professionalism and authenticity, working side-by-side with developers, architects, project managers, consultants and advertising agencies to form ongoing partnerships. Above everything else, Eton Property Group naturally develop and nurture connections, working hard to deliver the best outcomes for their partners. In all transactions, their team will establish, build and maintain relationships with intended target markets.



Established in 2010, C.Kairouz Architects is a Melbourne-based architecture and interior design firm led by Directors, Chahid Kairouz and Wojciech Huczek. Impressively equipped with degrees in architecture, construction, property and planning, Chahid and his team apply a collective industry experience guided by extensive building knowledge and sustainable principles when designing both functional and beautiful residential and commercial spaces.

With a mission to 'Strive for Better' and several awards to the CKA name, including dual wins at the prestigious International Property Awards 2019 for the iconic 'The General' development, C.Kairouz Architects are leaders in their field. The practice has a progressive, hands-on approach with a focus on design innovation and a goal to produce net-zero dwellings that improve communities, have minimal impact on the environment and enrich peoples lives.



Samssons Projects is a renowned, Melbourne based, building and construction company specialising in the building of high-end homes and bespoke multi-residential and commercial projects throughout Victoria. The boutique practice is comprised of experienced and locally skilled construction professionals who appreciate fine architectural details, source first-rate materials and offer a high level of director input throughout each stage to ensure consistent delivery and quality outcomes.

Samssons Projects have been commended for their work, receiving multiple industry awards including; Master Builders Victoria Awards 2019 – Winner of Best MultiUnit Development – 4-12 Units and HIA Victoria Awards 2019 – Winner of Best Apartment Complex up to \$20m. This recognition bolsters their reputation and commitment to producing well-built projects to the highest standard.



REGISTER INTEREST

BRADLEY DEAN 0413 508 866
KEITH JAMIESON 0409 352 504
BARBARA GIANNARELLI 0421 666 447

KIRRAGARDENS.COM.AU
3 DICKENS STREET, CAMBERWELL

CREATIVE BY EARL.ST

While all reasonable care has been taken in the preparation of this brochure and the particulars contained herein, it is intended to be a visual aid and does not necessarily depict the finished state of the property or object shown. No liability whatsoever is accepted for any direct or indirect loss or consequential loss or damage arising in any way out of any reliance upon this brochure. Purchasers must rely upon their own enquiries and inspections. Furniture is not included with the property. Dimensions and specifications are subject to change without notice. Illustrations and photographs are for presentation purposes and are to be regarded as indicative only. This brochure does not form part of, and is not, an offer or a contract of sale. The contract of sale sets out all of the terms and conditions of any sale and is the sole repository of the agreement between the seller and the buyer.

